

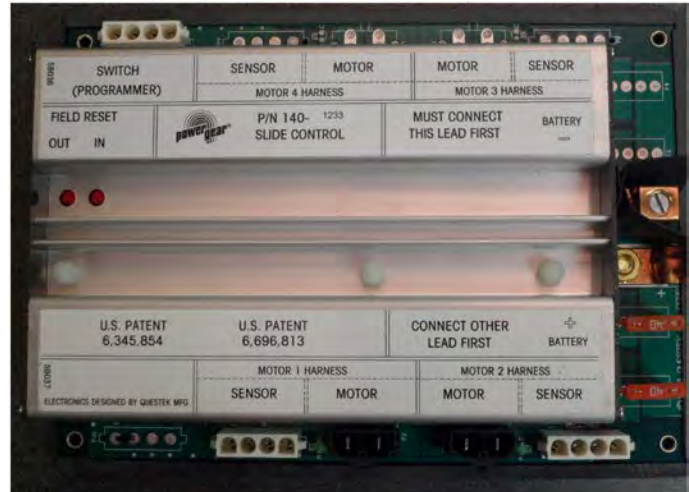


# Trouble Shooting Slide Out Controls 140-1233, 140-1249(S), 1510000165

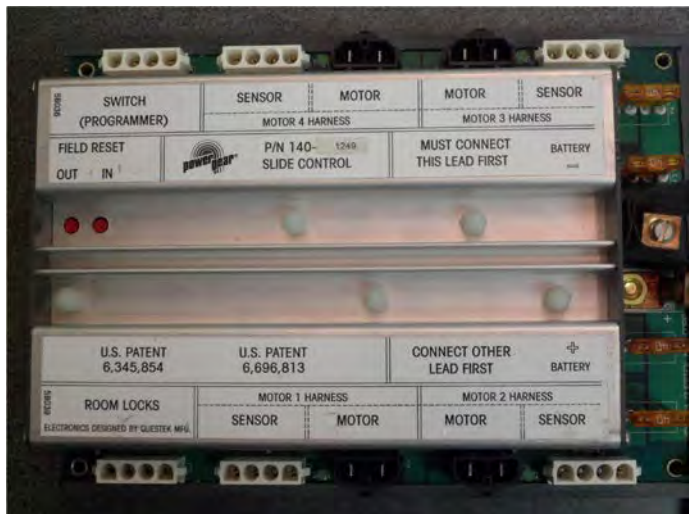
© Copyright Power Gear Issued: October 2012

3010002189, Rev. OB 8/13

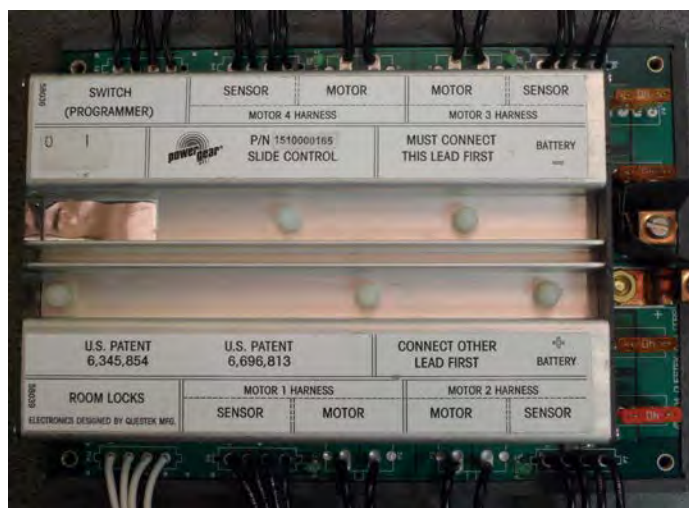
<u>Table of Contents:</u>	<u>Page:</u>
Control box pictures	1
Wiring diagram	2
Reference numbers	3
Slide room will not operate at all	4
"A": Control box motor LED'S stay solid	5
"B": Control Box motor LED'S Momentary flash	6
"C": No motor LED's	7
The slide out room works in <u>teach</u> mode, but <b>not</b> in <u>run</u> mode when using the teach pendant / programmer	8
Slide out room works with teach pendant / programmer in run mode, but does not work when coach wiring connections are plugged back into slide out control.	9
Additional reference documents	10



140-1233



140-1249(S)



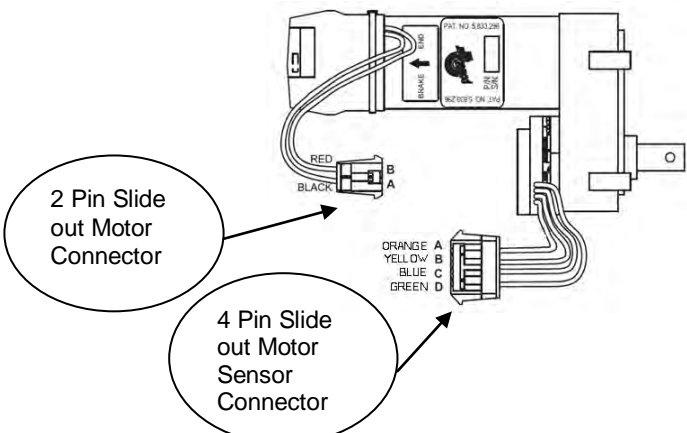
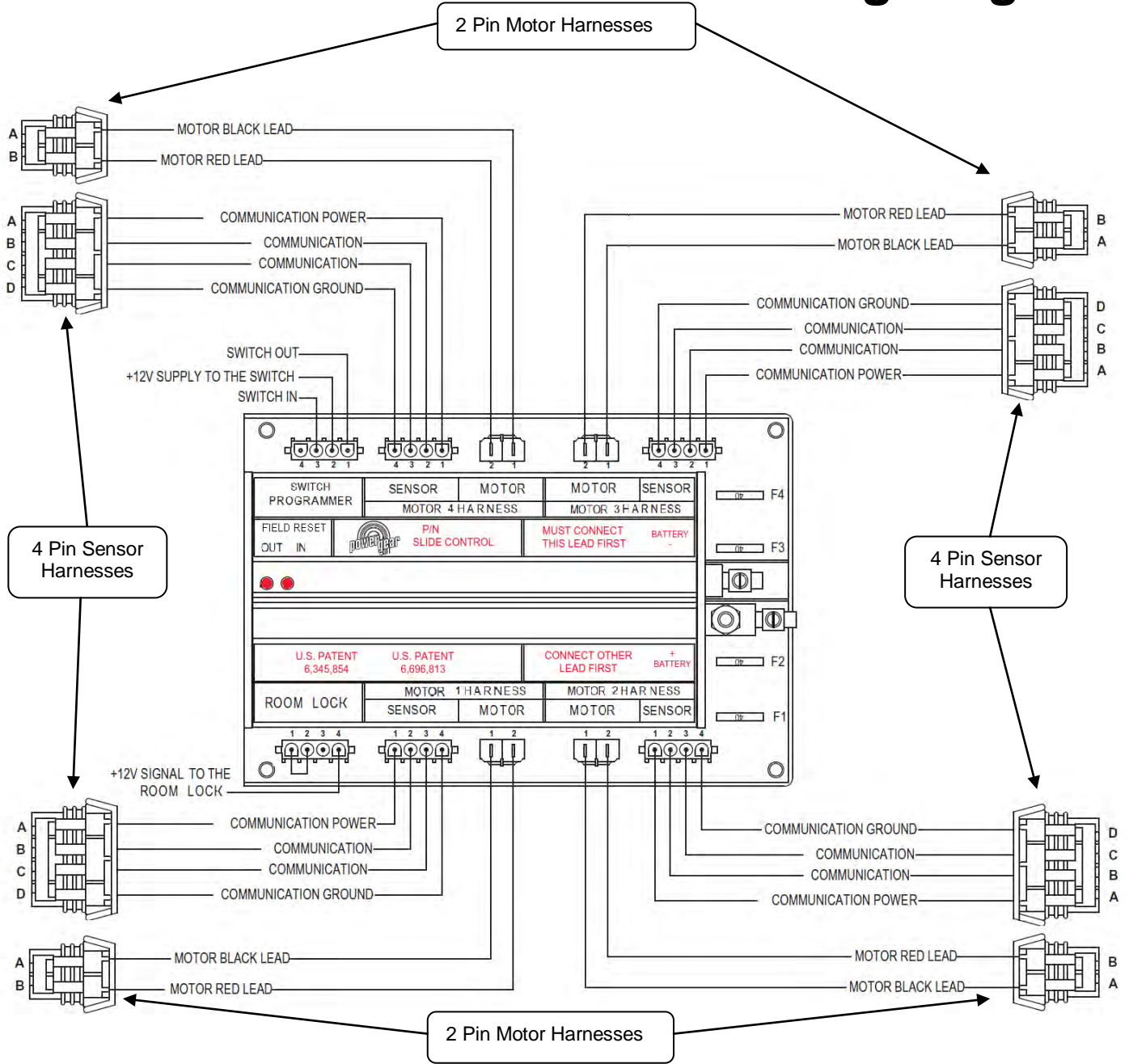
1510000165

## WARNING

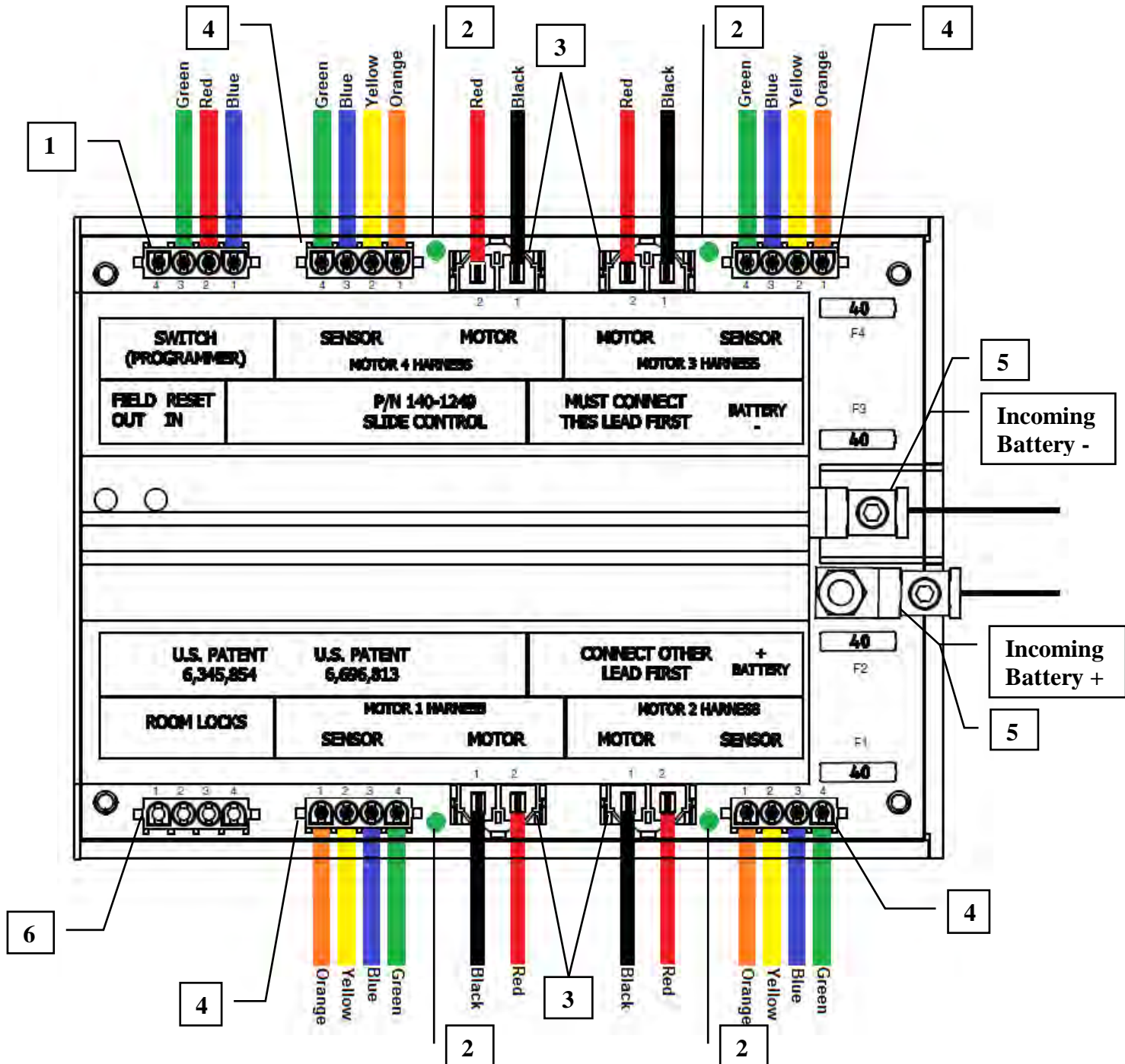
Always make sure that the slide out room path is clear of people and objects before and during operation of the slide out room. Always keep away from the slide out rails when room is being operated. The gear assembly may pinch or catch on loose clothing.

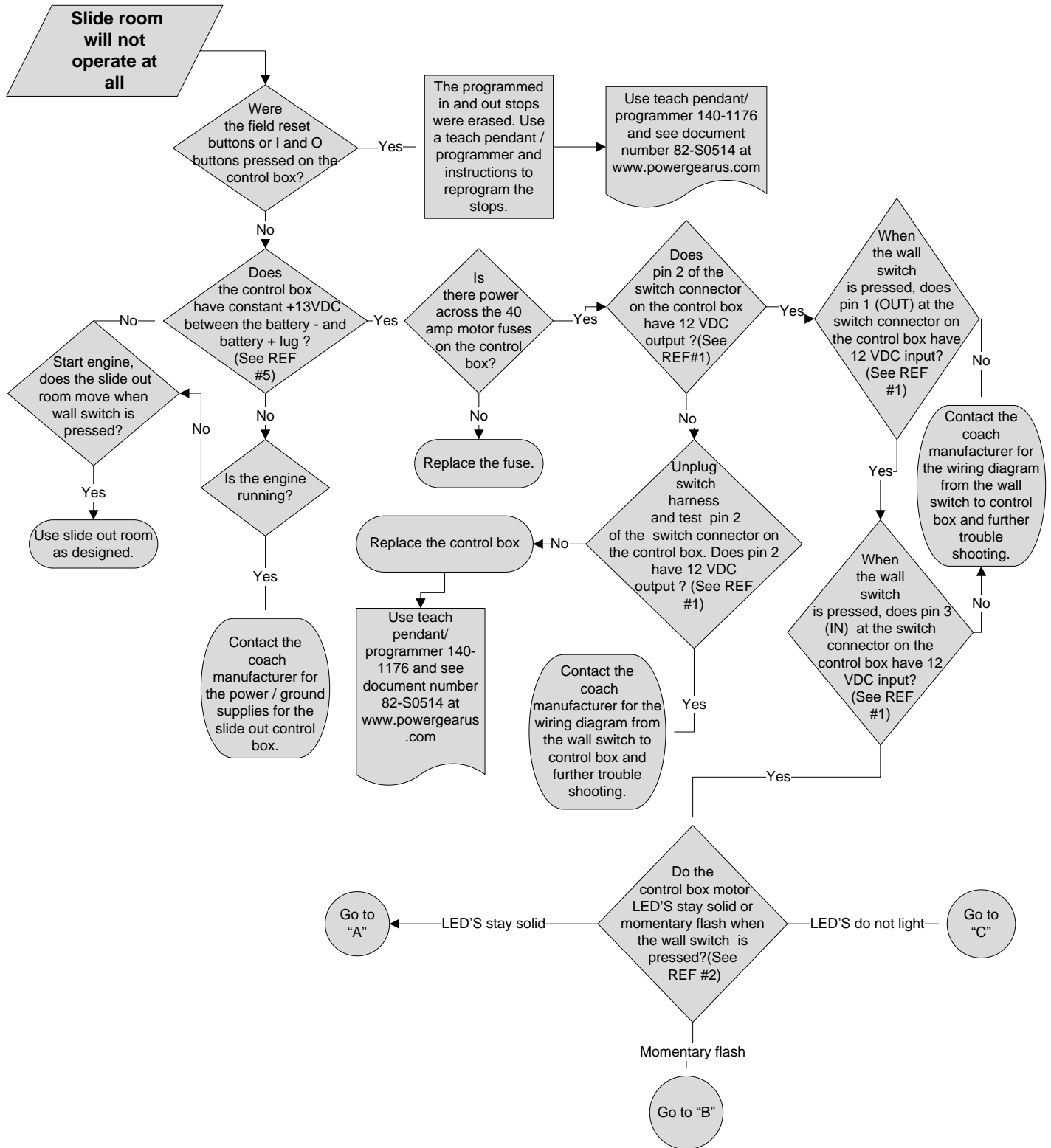


# Wiring Diagram



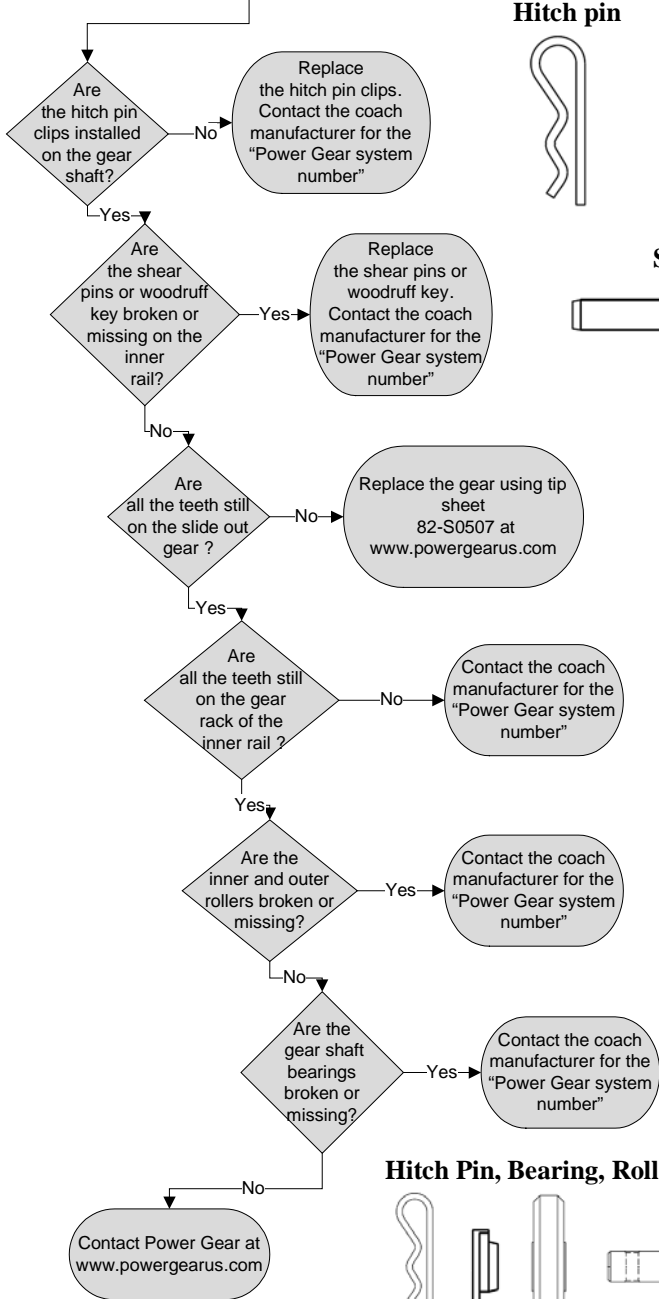
REFERENCE NUMBERS	
Reference # 1	Programmer (teach pendant) connection
Reference # 2	LED operation indicator
Reference # 3	Motor plug
Reference # 4	Sensor plug
Reference # 5	Incoming Battery + / Battery -
Reference # 6	Room locks plug with jumper wire





**"A"**  
**Control box motor LED'S stay solid**

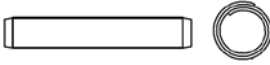
The control box is sending power to the motor assemblies. If the room is not moving inspect rails for damaged parts.  
Contact the coach manufacturer for the "Power Gear system number" for parts break down.



**Hitch pin**



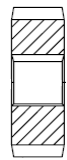
**Shear Pin**



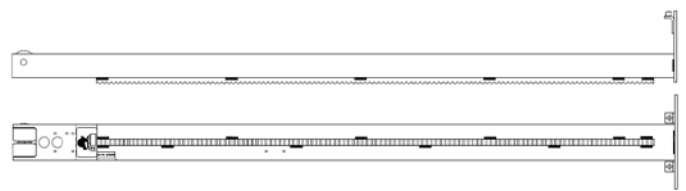
**Woodruff Key**



**Gear**



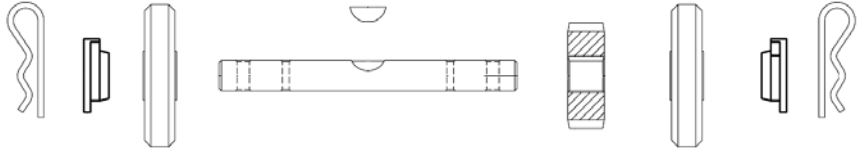
**Gear Rack on the bottom of Inner Rail**



**Roller**



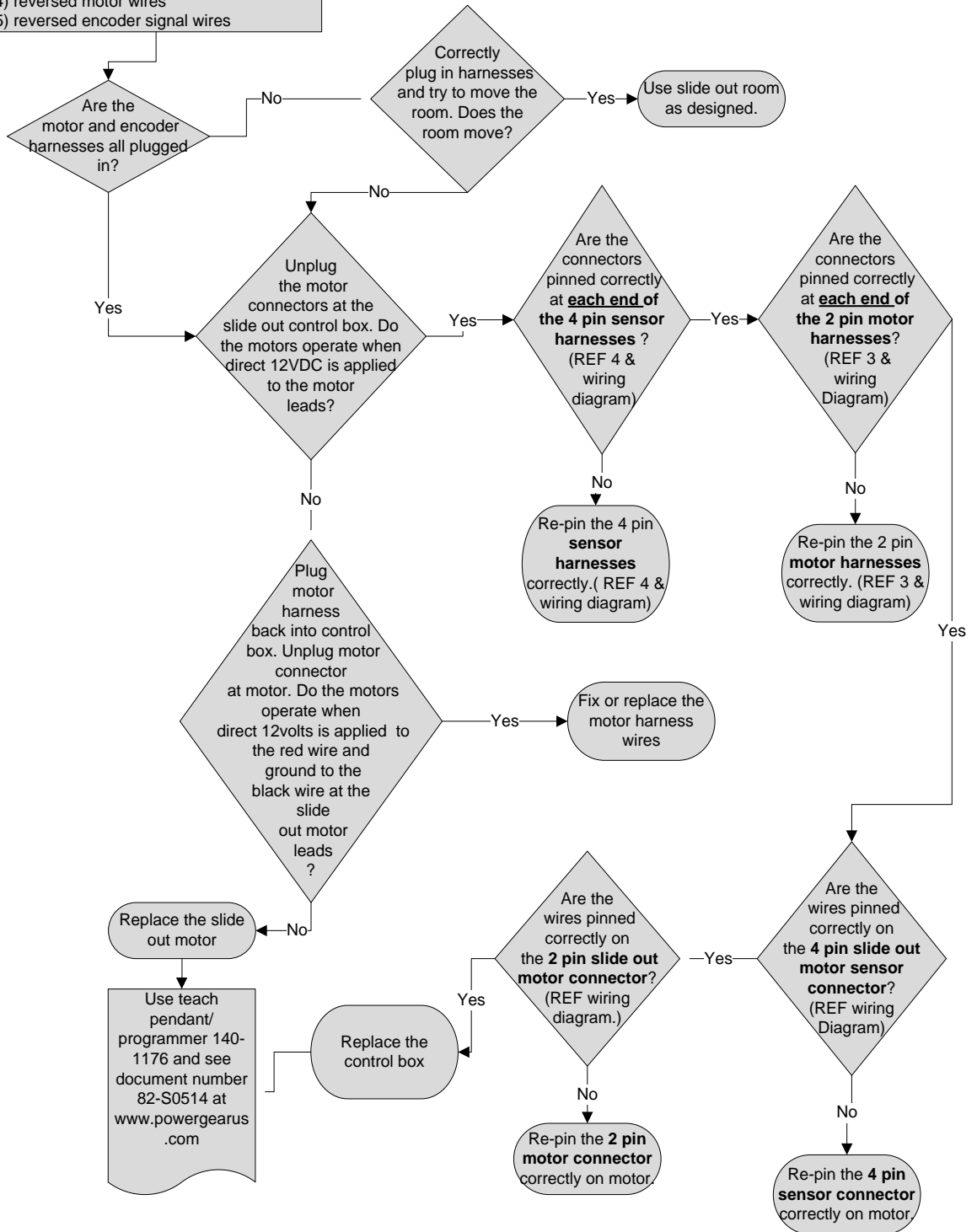
**Hitch Pin, Bearing, Roller, Gear Shaft, Woodruff Key, Gear, Roller, Bearing, Hitch Pin**

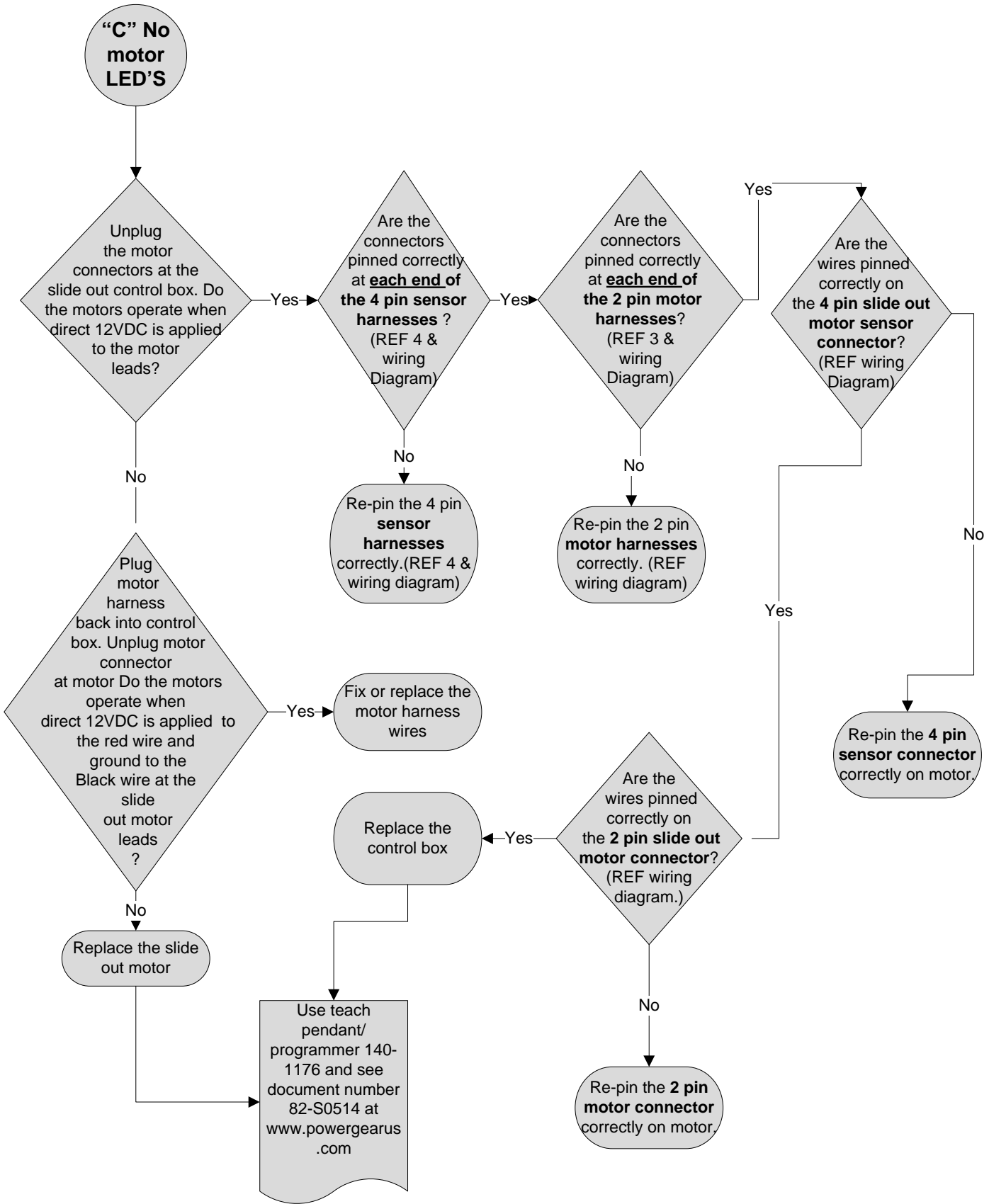


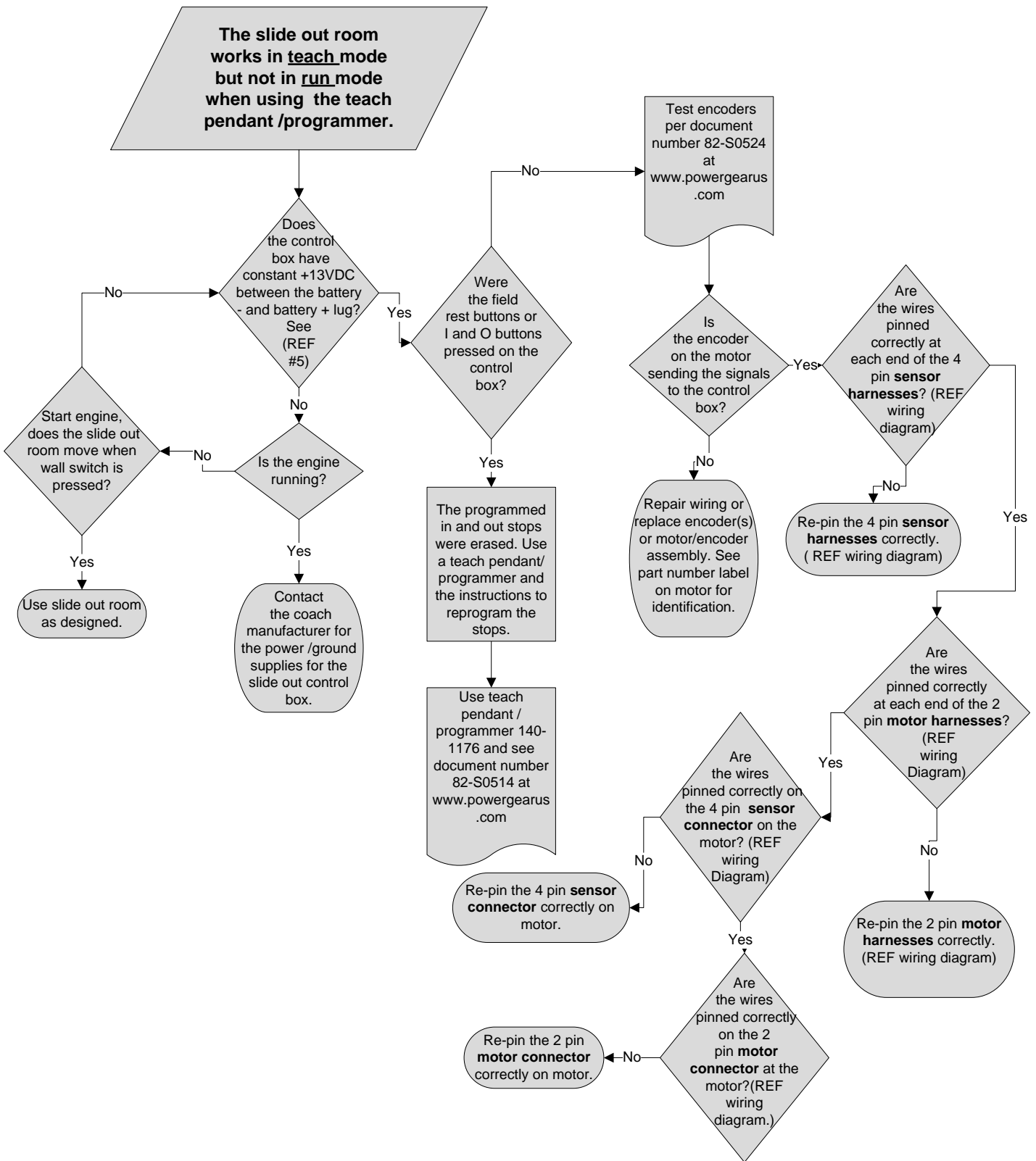
Contact Power Gear at [www.powergearus.com](http://www.powergearus.com)

**"B"**  
**Control box  
motor LED'S  
Momentary  
flash**

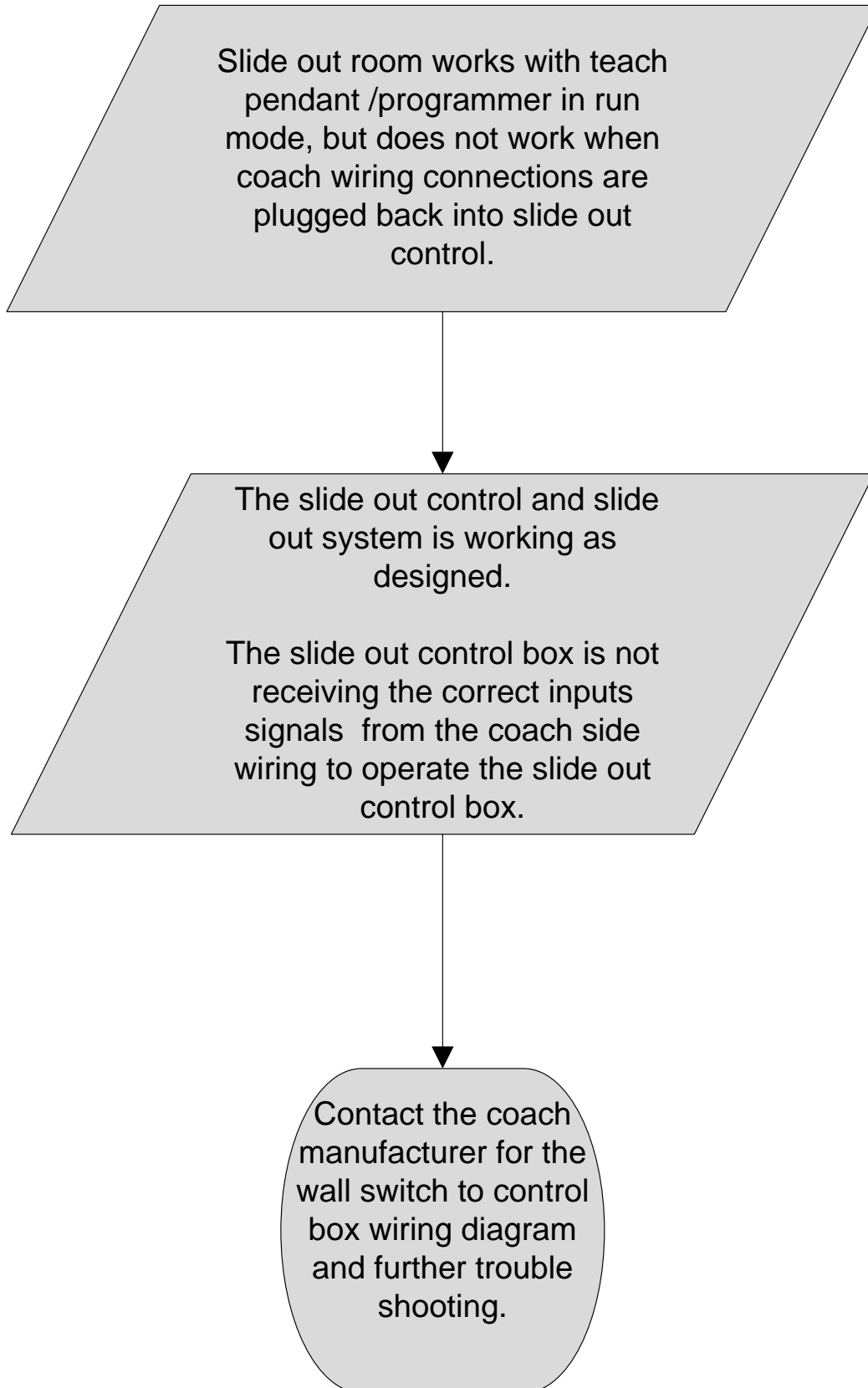
Control box is not operating because it senses one of these conditions:  
1) bad harness connection  
2) low voltage / high motor amp draw  
3) one or more motors not moving  
4) reversed motor wires  
5) reversed encoder signal wires











**Additional Reference Publications Located At  
WWW.POWERGEARUS.COM**

81-1299	Slide out room height adjustment
82-S0295	Flat floor room height adjustment
82-S0378	Operators manual full wall slide systems
82-S0379	Service / Installation manual full wall slide system
82-S0503	Electric slide out system operations and service manual
82-S0510	Slide out control replacement
82-S0514	140-1176 Programmer / teach pendant Instructions
82-S0524	Encoder Test 1: slide out controls 140-1233, 140-1249 (S), 1510000165
82-S0525	Encoder Test 2: slide out controls 140-1233, 140-1249 (S), 1510000165
3010000062	Service manual Gulf Stream electronic full wall slide systems
3010000067	Trouble shooting Information for Rv slide outs, emergency retract module instructions (ERM)



This manual has been provided courtesy of  
My RV Works, Inc.

[www.myrvworks.com](http://www.myrvworks.com)



You can find more RV service manuals here:

[www.myrvworks.com/manuals](http://www.myrvworks.com/manuals)

Over the years of running a mobile RV repair service, having a dedicated place to access service manuals for all the different appliances and components found on RVs was something that I always had a desire to create.

I hope this resource makes your RV repairs easier, as it has mine, but please be careful and follow proper safety practices when attempting to repair your own RV.

If in doubt, please consult with a professional RV technician!



DARREN KOEPP - OWNER, MY RV WORKS, INC.

*All service manuals provided on [www.myrvworks.com](http://www.myrvworks.com) are believed to be released for distribution and/or in the public domain.*