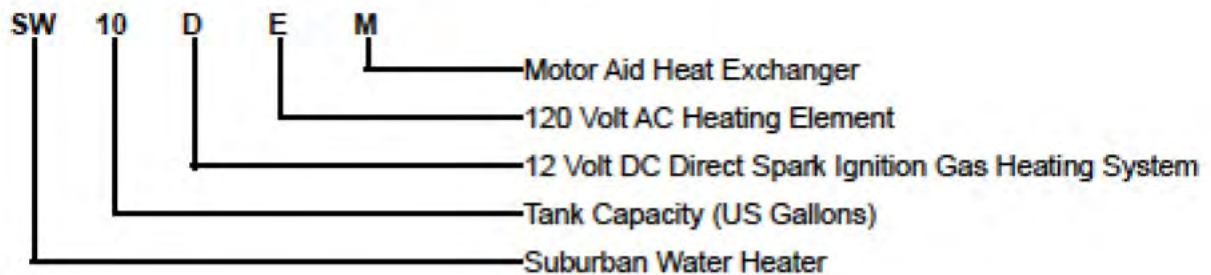


Water Heaters

Below is a diagram to help determine the functionality of your Suburban water heater. This should help determine parts and issues potentially associated with your model

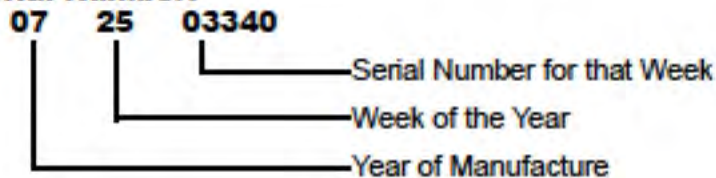
SUBURBAN RV WATER HEATER IDENTIFICATION

EXAMPLE OF MODEL NUMBER EXPLANATION



EXAMPLE SERIAL NUMBER DESCRIPTION

Sample Serial Number:



MODEL OPTIONS:

- P: Pilot Gas Heating Only
- PR: Pilot Gas heating with 12 Volt DC Pilot Re-igniter
- PE: Pilot Gas Heating with 120 Volt AC Heating Element
- PER: Pilot Gas Heating with 12 Volt DC Pilot Re-igniter and 120 Volt AC Heating Element
- D: 12 Volt DC Direct Spark Ignition Gas Heating Only
- DE: 12 Volt DC Direct Spark Ignition Gas Heating and 120 Volt AC Heating Element
- DEL: 12 Volt DC Direct Spark Ignition Gas Heating and 120 Volt AC Heating Element with 12 Volt Relay for Interior Operation of Electric Heating System.
- DEM: 12 Volt DC Direct Spark Ignition Gas Heating and 120 Volt AC Heating Element and Motor Aid Heat Exchanger *(Motor Home Only)
- V: 120 Volt AC Direct Spark Ignition Gas Heating Only
- VE: 120 Volt AC Direct Spark Ignition Gas Heating and 120 Volt AC Heating Element

CAPACITY SIZES:

- 4 Gallon
- 6 Gallon
- 10 Gallon
- 12 Gallon
- 16 Gallon

This manual has been provided courtesy of
My RV Works, Inc.

www.myrvworks.com



You can find more RV service manuals here:

www.myrvworks.com/manuals

Over the years of running a mobile RV repair service, having a dedicated place to access service manuals for all the different appliances and components found on RVs was something that I always had a desire to create.

I hope this resource makes your RV repairs easier, as it has mine, but please be careful and follow proper safety practices when attempting to repair your own RV.

If in doubt, please consult with a professional RV technician!



DARREN KOEPP - OWNER, MY RV WORKS, INC.

All service manuals provided on www.myrvworks.com are believed to be released for distribution and/or in the public domain.