

INSTALLATION INSTRUCTIONS

CHANGING COOLING UNIT FOR RM1350

Before you begin:

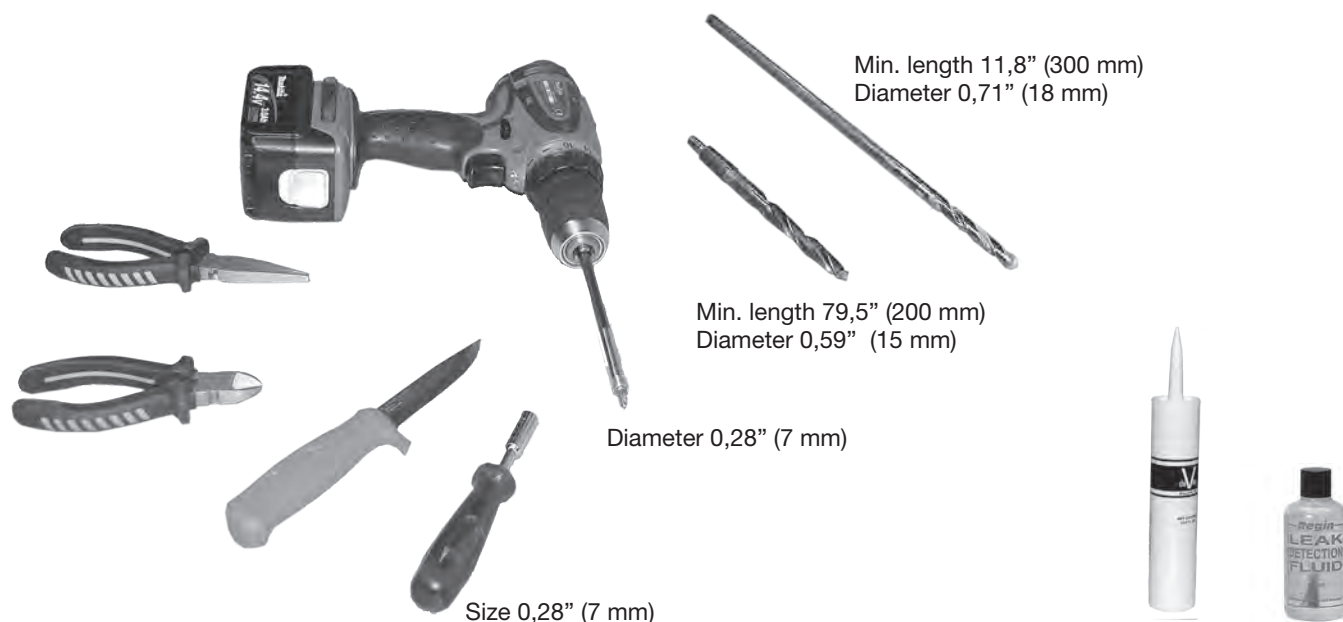
- Read through the whole instruction.
- Turn off the propane at the tank.
- Perform the following through lower side vent or lower service door:
 - Unplug the 120 V AC cord from the wall receptacle.
 - Disconnect the 12 V DC wires from the terminal block.
 - Remove gas line from gas cock.
- For models with ice maker/water dispenser—turn off the water supply and remove hose.
- Remove refrigerator from recess.



In order to detach some components it will become necessary to lay the refrigerator on its face. Place refrigerator on soft or padded material to avoid any kind of damage.

To facilitate installation of the replacement cooling unit, before removing any parts, please take a few minutes to inspect the current installation, the wiring, how the appliance is assembled and so on. Put removed parts in a safe place for reinstallation later.

TOOLS/EQUIPMENT REQUIRED



INSTALLATION PROCEDURE

1. Open freezer doors. Take out shelves and remove the 12 screws.



2. Remove ice maker and disconnect cable harness.



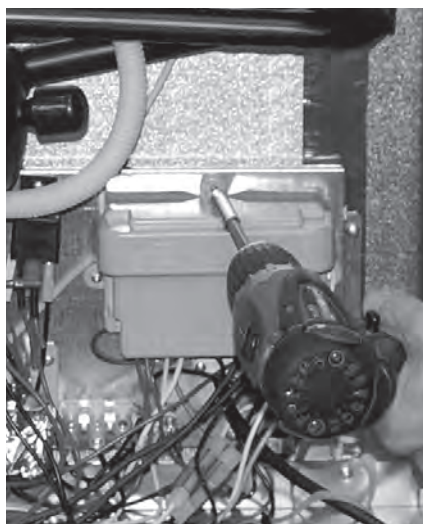
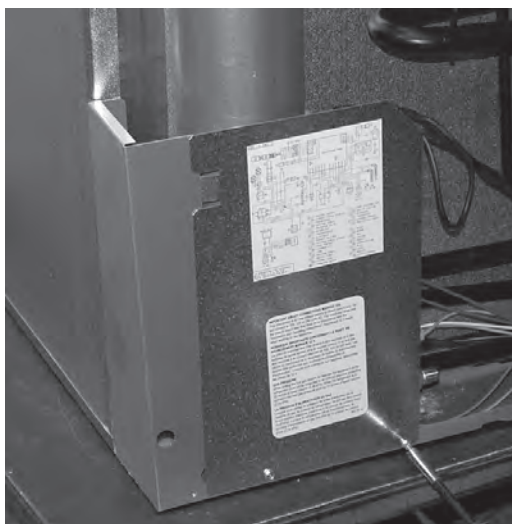
3. Open fridge doors and remove the 6 screws anchoring the evaporator fins.



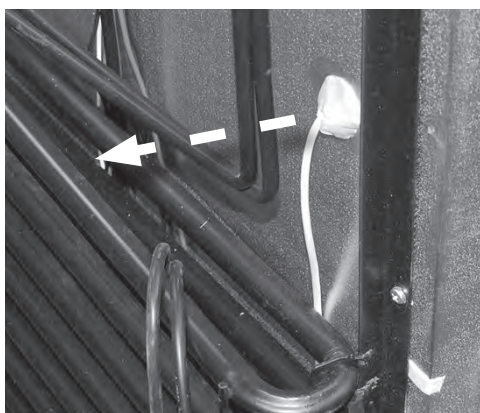
4. Detach thermistor.



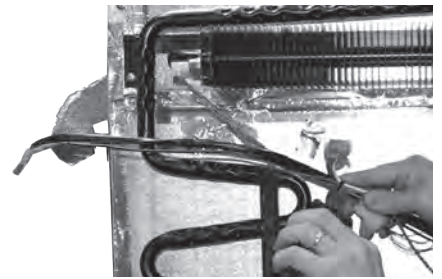
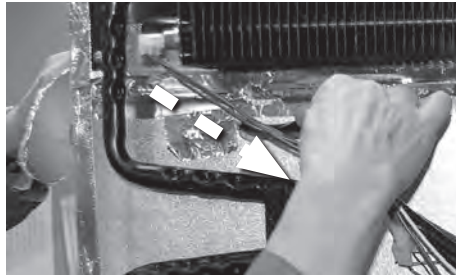
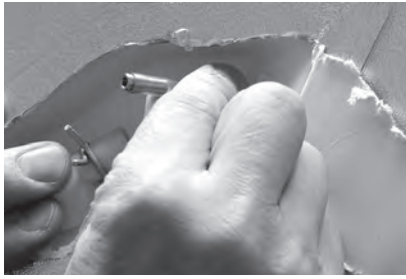
5. Go to the back of the refrigerator. Loosen screws and remove cover plate and power module cover.



6. Gently pull to detach thermistor and then disconnect from the power module.



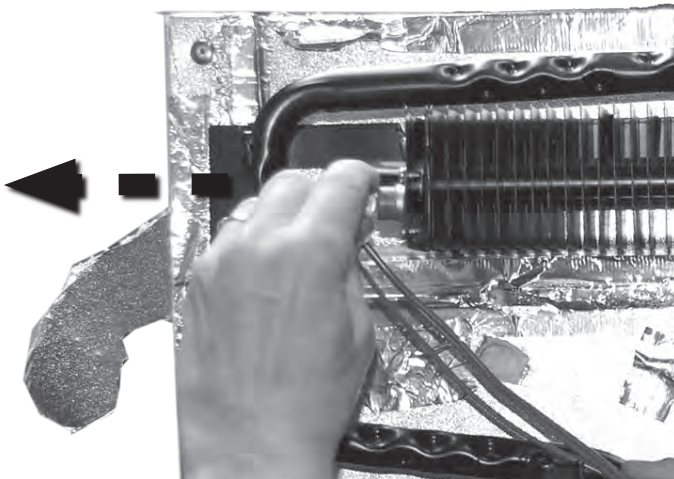
7. If applicable, detach water supply hose. Pull gently. Cut strips to disengage the hose.



8. Loosen screws and remove the two fans. Disconnect the wires.



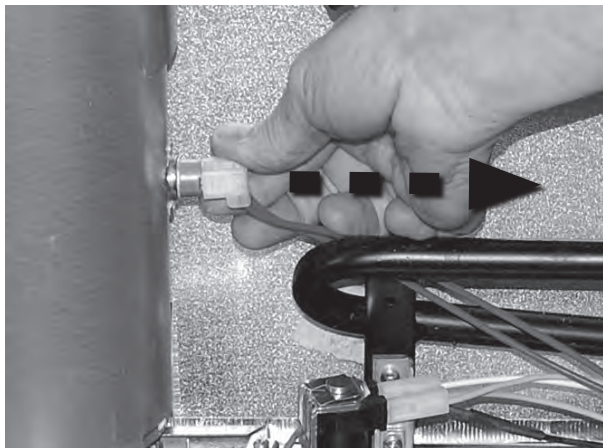
9. Disconnect thermostat.



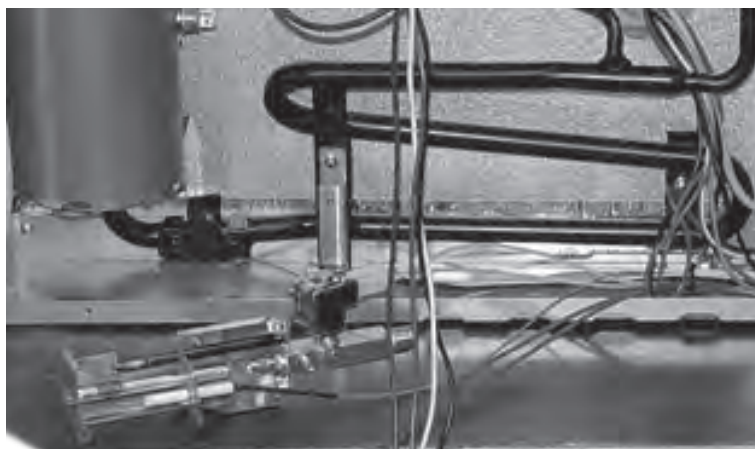
10. Loosen/open clips to disengage wires/harnesses from the back of the refrigerator. Follow these and disconnect from connection points.



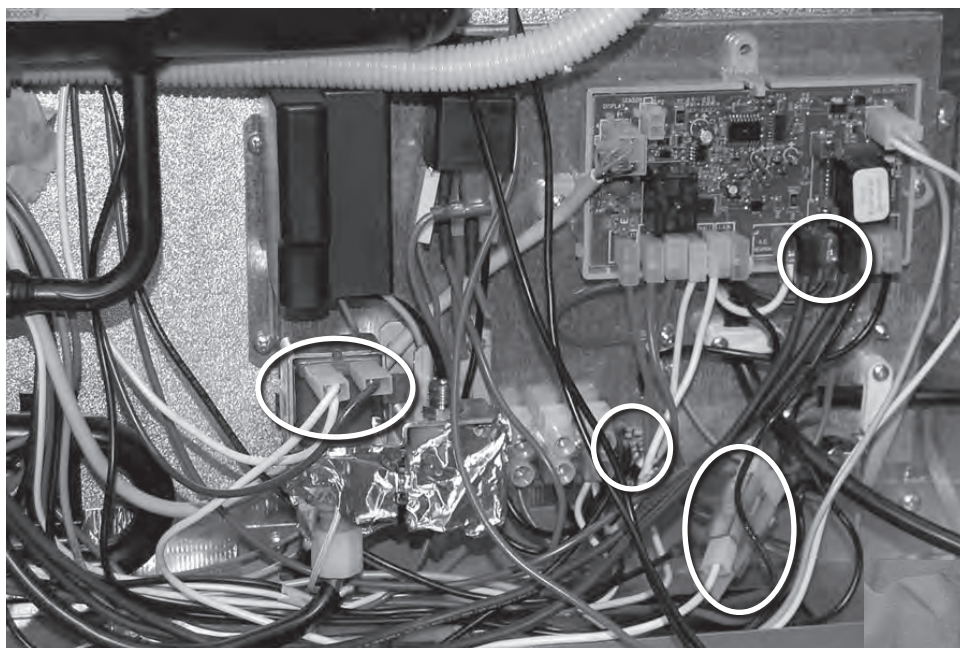
11. Disconnect thermo fuse.



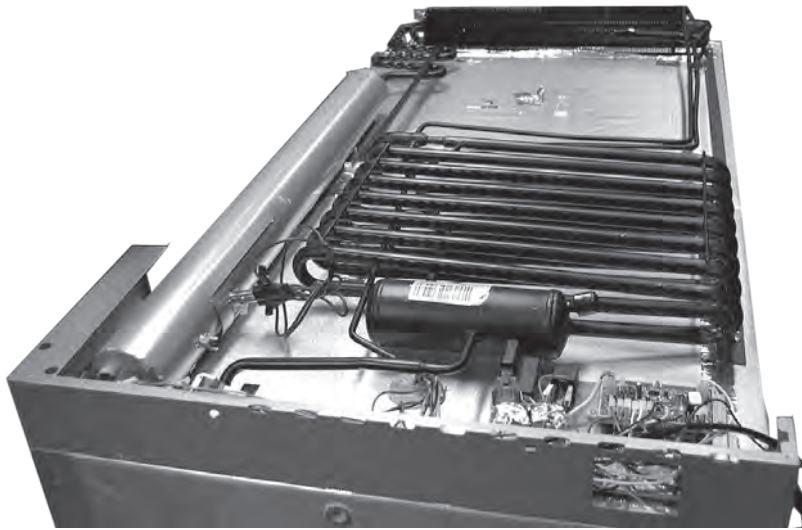
12. Detach burner and...



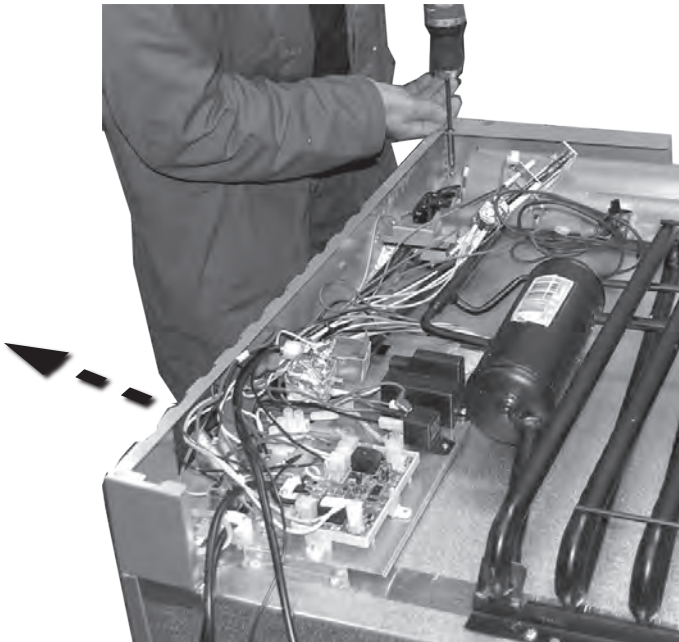
...continue to rearrange, detach, disconnect or remove parts that interferes with removing the cooling unit.



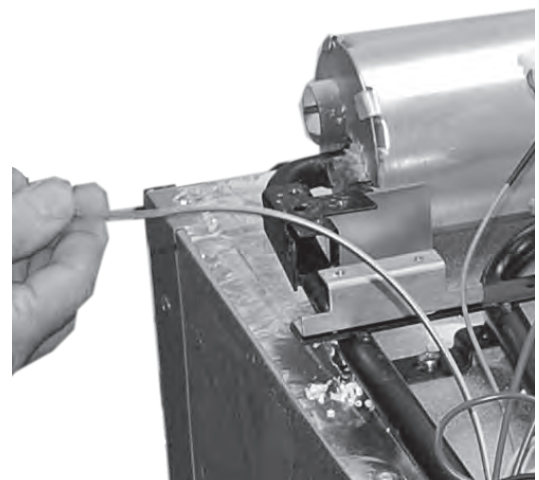
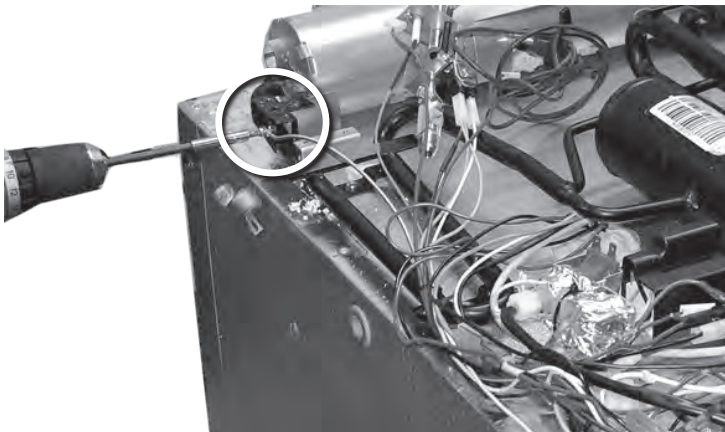
13. Gently place refrigerator on its face. To avoid scratches, place on non-abrasive surface.



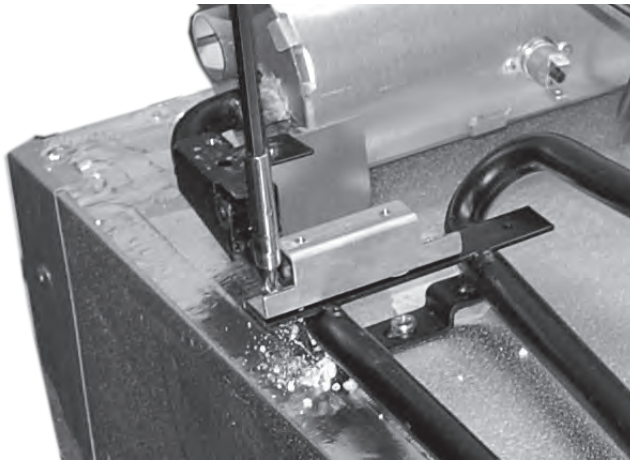
14. Loosen screws and remove base plate.



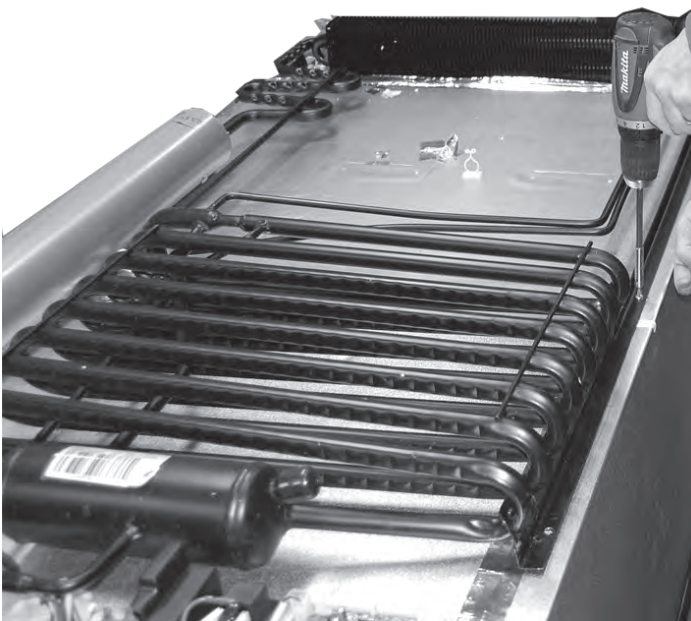
15. Loosen screw and detach grounding wire.



16. Loosen screws and remove bracket.



17. Remove all the screws holding the cooling unit to the refrigerator.



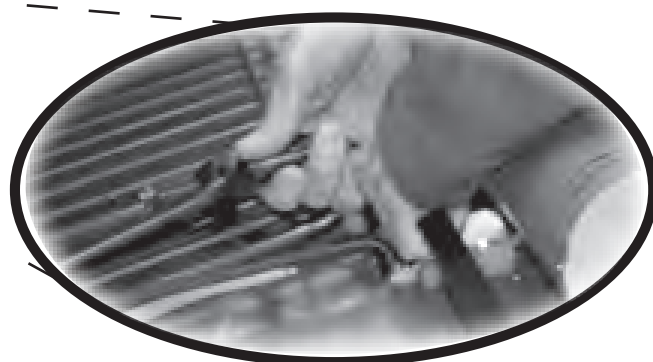
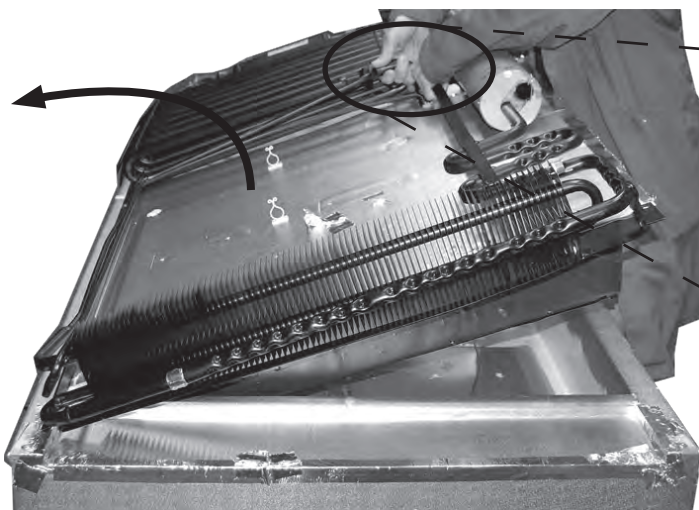
18. Remove foil tape.



19. Insert a knife blade and cut alongside the edge.



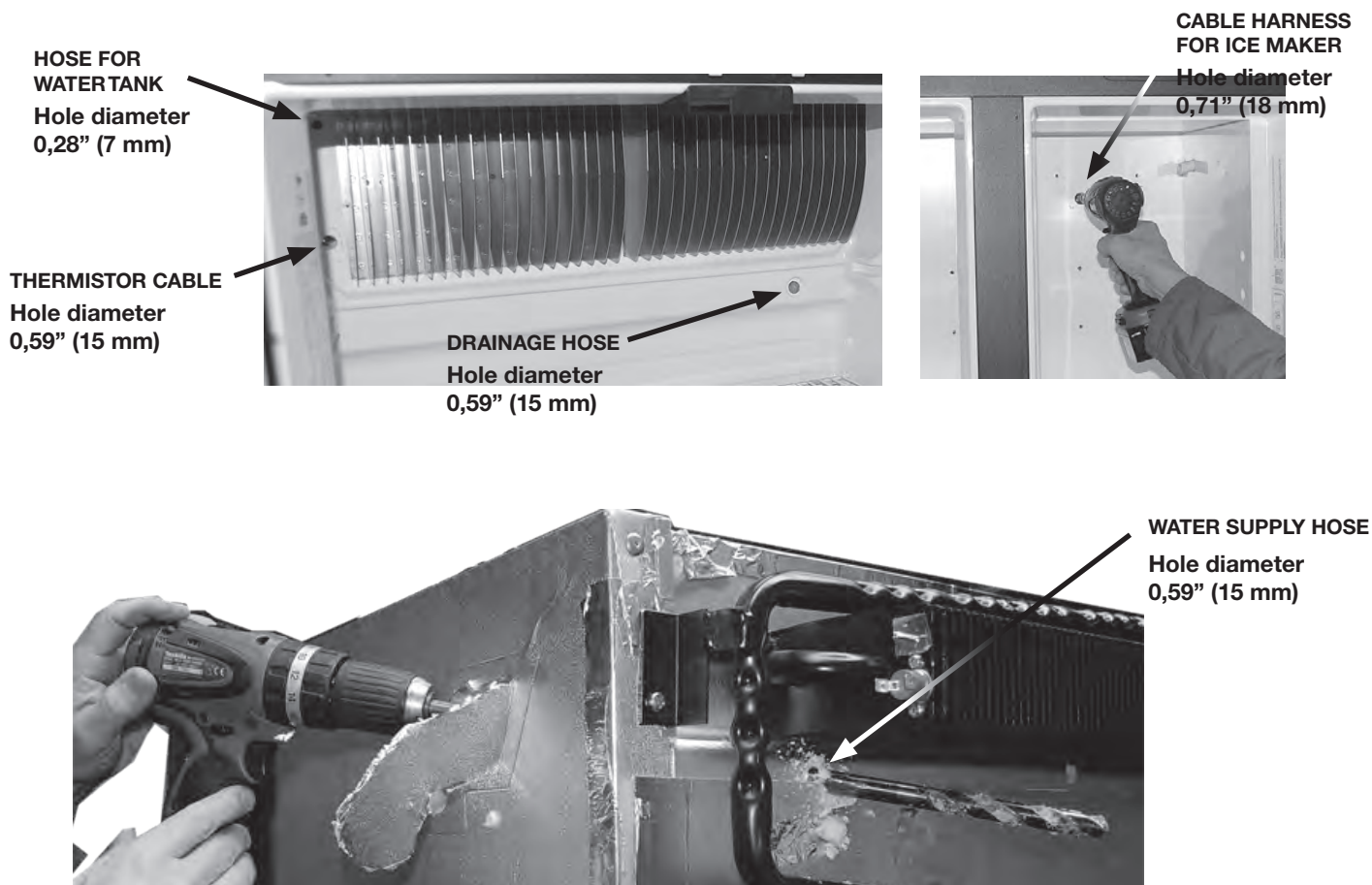
20. To remove cooling unit, take hold of the gas temperature exchanger and lift to detach.



21. Locate the replacement cooling unit. Apply thermal mastic to the coils of the cooling unit.



22. Place cooling unit in cabinet. Tighten the screws holding the unit to back of cabinet.
23. Replace foil tape, bracket, grounding wire. and base plate.
24. Return refrigerator to upright position.
25. The replacement cooling unit does not come with pre-drilled holes for harness, cable and hoses. Open the refrigerator doors and use the existing holes as a template when drilling holes for the drainage hose and thermistor cable. If applicable, drill holes for the water tank hose, cable harness for the ice maker and for the water supply hose (located on the side of the refrigerator).



26. Reinstall all components removed during removal of the old cooling unit. Make sure to tighten screws firmly. Route water lines and harnesses, connect wires, connect to propane tank and to 120 V AC. For wiring diagram, refer to User manual or Spare parts list.
27. Check for gas leaks using a commercial leak detecting fluid.
28. Check for proper cooling.
29. Reinstall refrigerator.

This manual has been provided courtesy of
My RV Works, Inc.

www.myrvworks.com



You can find more RV service manuals here:

www.myrvworks.com/manuals

Over the years of running a mobile RV repair service, having a dedicated place to access service manuals for all the different appliances and components found on RVs was something that I always had a desire to create.

I hope this resource makes your RV repairs easier, as it has mine, but please be careful and follow proper safety practices when attempting to repair your own RV.

If in doubt, please consult with a professional RV technician!



DARREN KOEPP - OWNER, MY RV WORKS, INC.

All service manuals provided on www.myrvworks.com are believed to be released for distribution and/or in the public domain.