



# Service Bulletin

## Trouble Shooting Procedures for Power Boards and Control Panels

### Purpose

Use this bulletin to diagnose Norcold refrigerator control panels and power boards. Most problems can be linked to components controlled by the power board or voltage input to the power board. Sometimes the power board or control board will need to be replaced. Use this bulletin to determine the correct action.

### Background

The electronic control system controls the refrigerator's power board and control panel. Use the electronic control system diagnostic mode to identify problems with the power board and control panel.

The electronic controls work on 10.5 to 15.4 volts DC. The AC power cord that is attached to the power board conducts 120 volts AC power from the RV receptacle to the power board. It does not provide power to the electronic controls.

### Applicability

Before trying to fix or replace the control panel and power board, make sure these areas, which can be affected by the electronic controls, are working properly:

- Proper refrigerator installation
- Adequate ventilation
- Leveled operation
- AC heater(s)
- DC heater
- Burner and orifice assembly
- Fan(s)
- Heat deflector cap (flue cap)
- Flue baffle

### IMPORTANT!

The power board and the control panel do not control the fans, ice maker, or the ice maker water valve.

### List of Procedures

**Procedure A:** Checking Power Board 628661 Diagnostics Inputs and Outputs on N41X/N41X.3/N51X/N51X.3/N62X/N82X Models.

**Procedure B:** Checking Power Board 628661 Diagnostics Inputs and Outputs on N64X/N64X.3/N84X/N84X.3/12XX Models.

**Procedure C:** Checking Power Board 621267/621268 Diagnostics Inputs and Outputs on N41X/N41X.3/N51X/N51X.3/N62X/N82X Models.

**Procedure D:** Checking Power Board 621269/621270/621271/621272 Diagnostics Inputs and Outputs on N64X/N64X.3/N84X/N84X.3/12XX Models.

**Procedure E:** Checking DC Power Input to the Power Board and Power Board DC power output to the Control Panel.

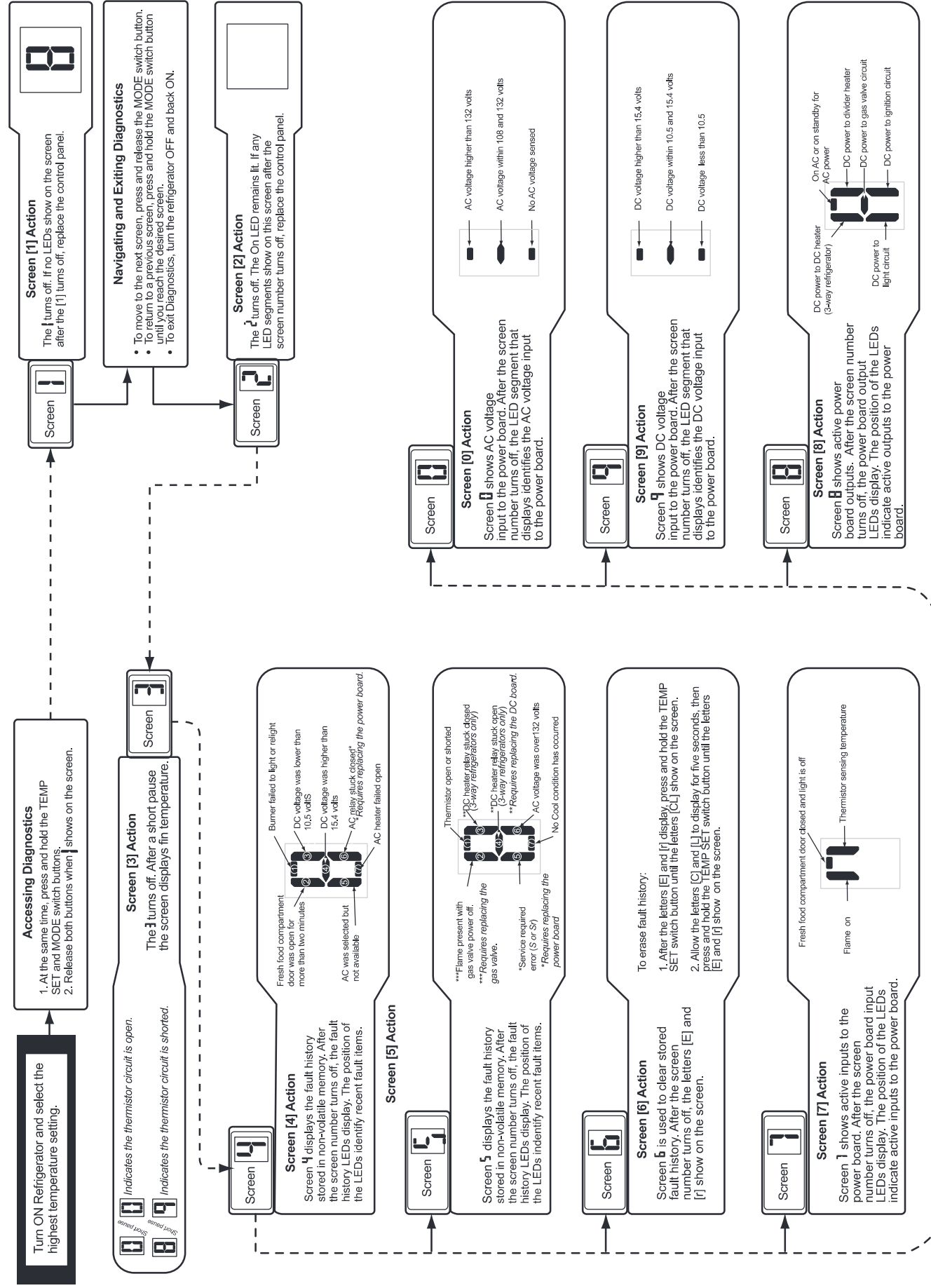
**Procedure F:** Checking DC Power Input at the Control Panel (applies to Power Boards 621267/621268/621269/621270/621271/621272/621991).

**Procedure G:** Checking DC Power Input at the Control Panel (applies to Power Board 628661).

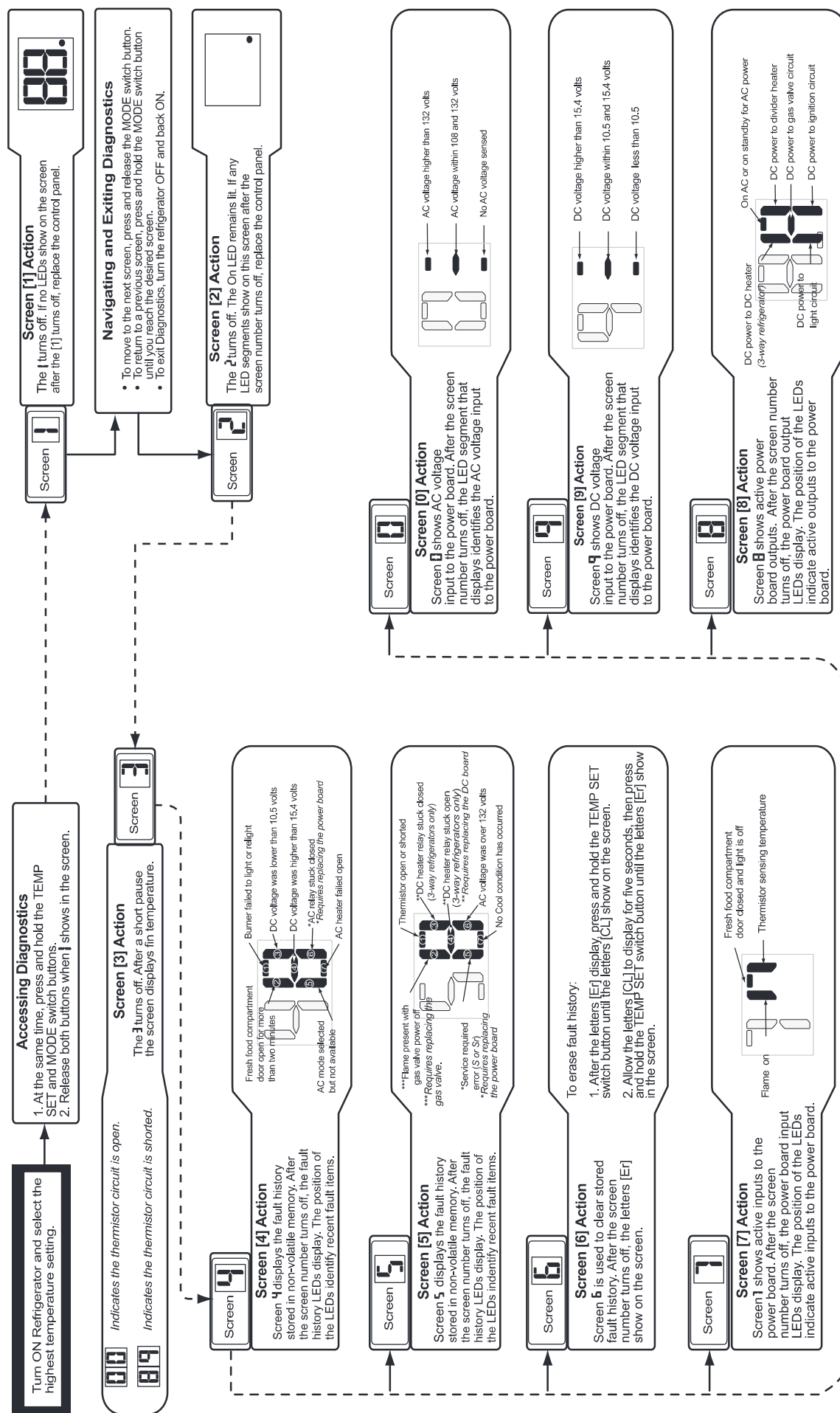
**Procedure H:** Checking Electronic Controls AUTO Operation (Except N61X/N8X Refrigerators).

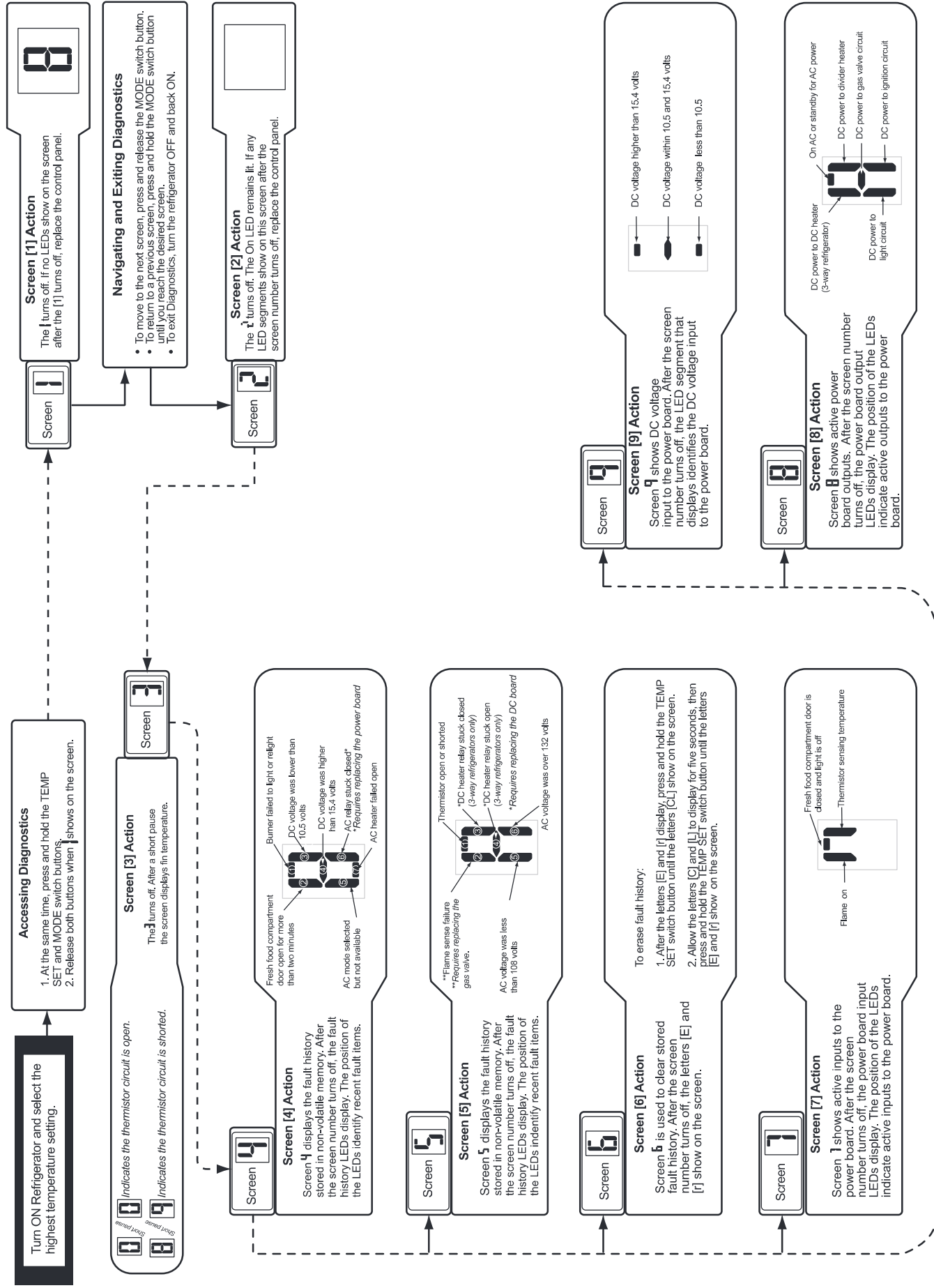
**Procedure I:** Checking Electronic Controls Operation N61X/N8X Refrigerators.

## Procedure A: Checking Power Board 628661 Diagnostics Inputs and Outputs – N41X / N41X.3 / N51X / N51X.3 / N62X / N82X Refrigerators

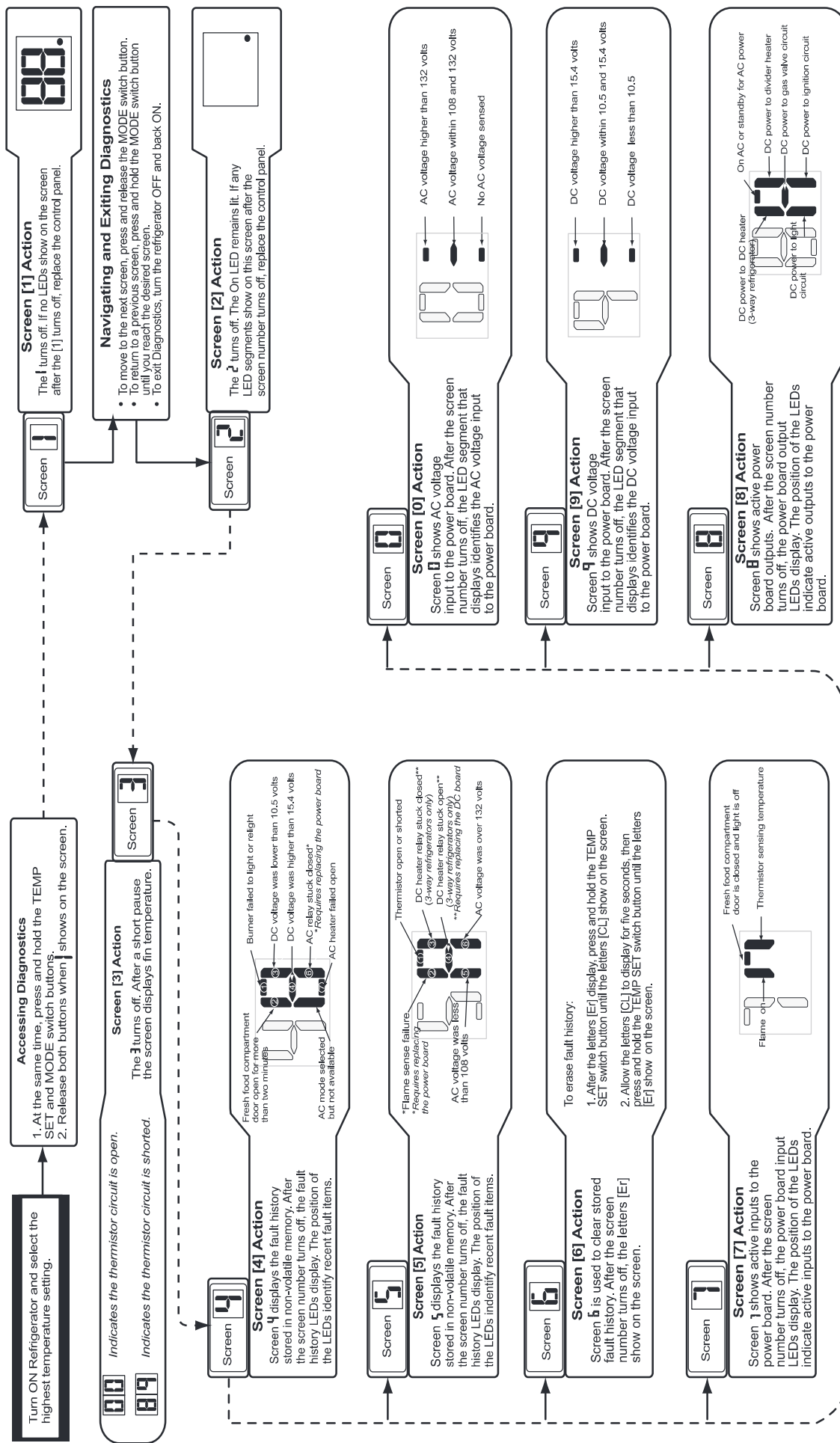


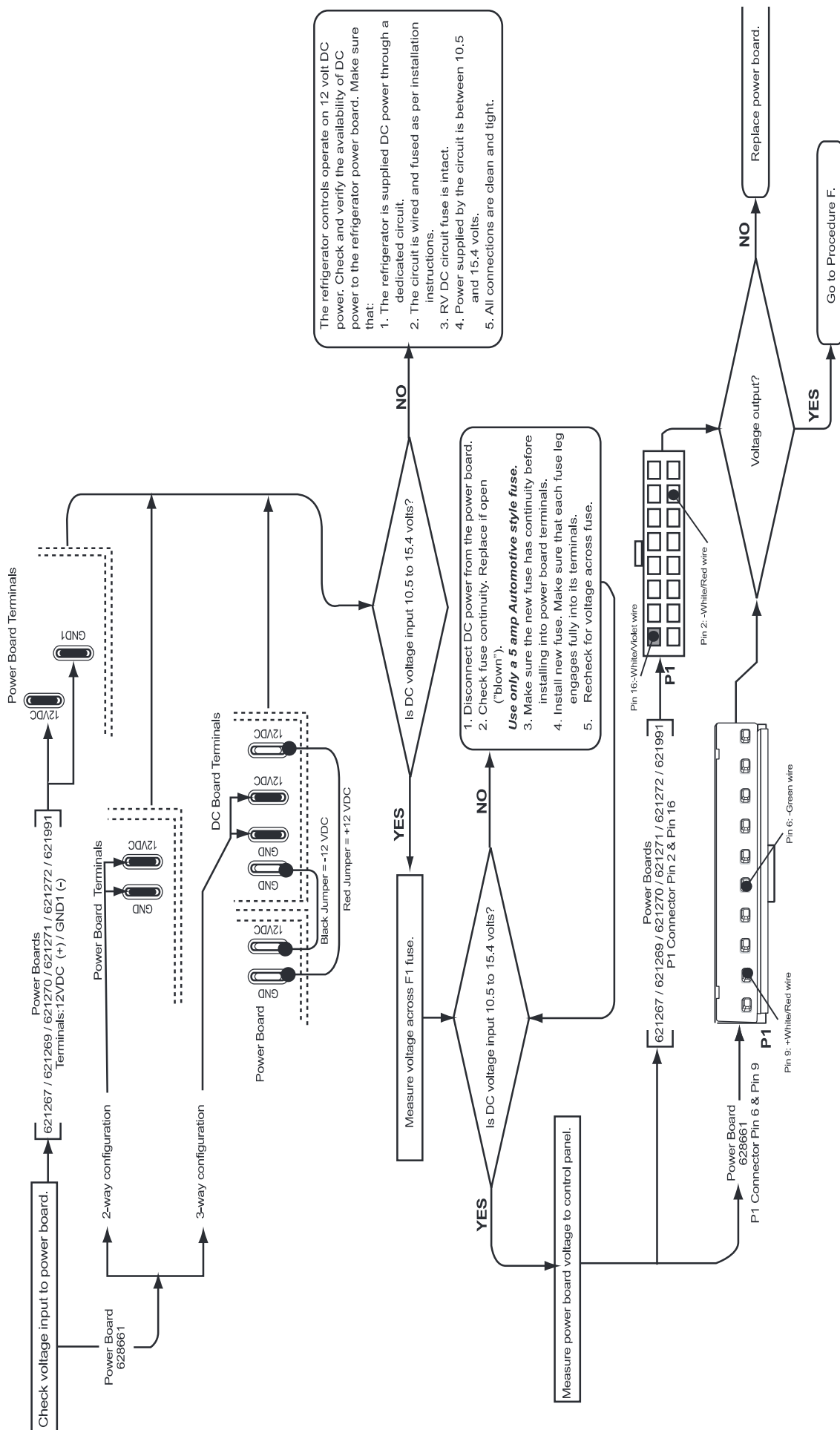
## Procedure B: Checking Power Board 628661 Diagnostics Inputs and Outputs N64X / N64X.3 / N84X / N84X.3 / N109X / 12XX Refrigerators



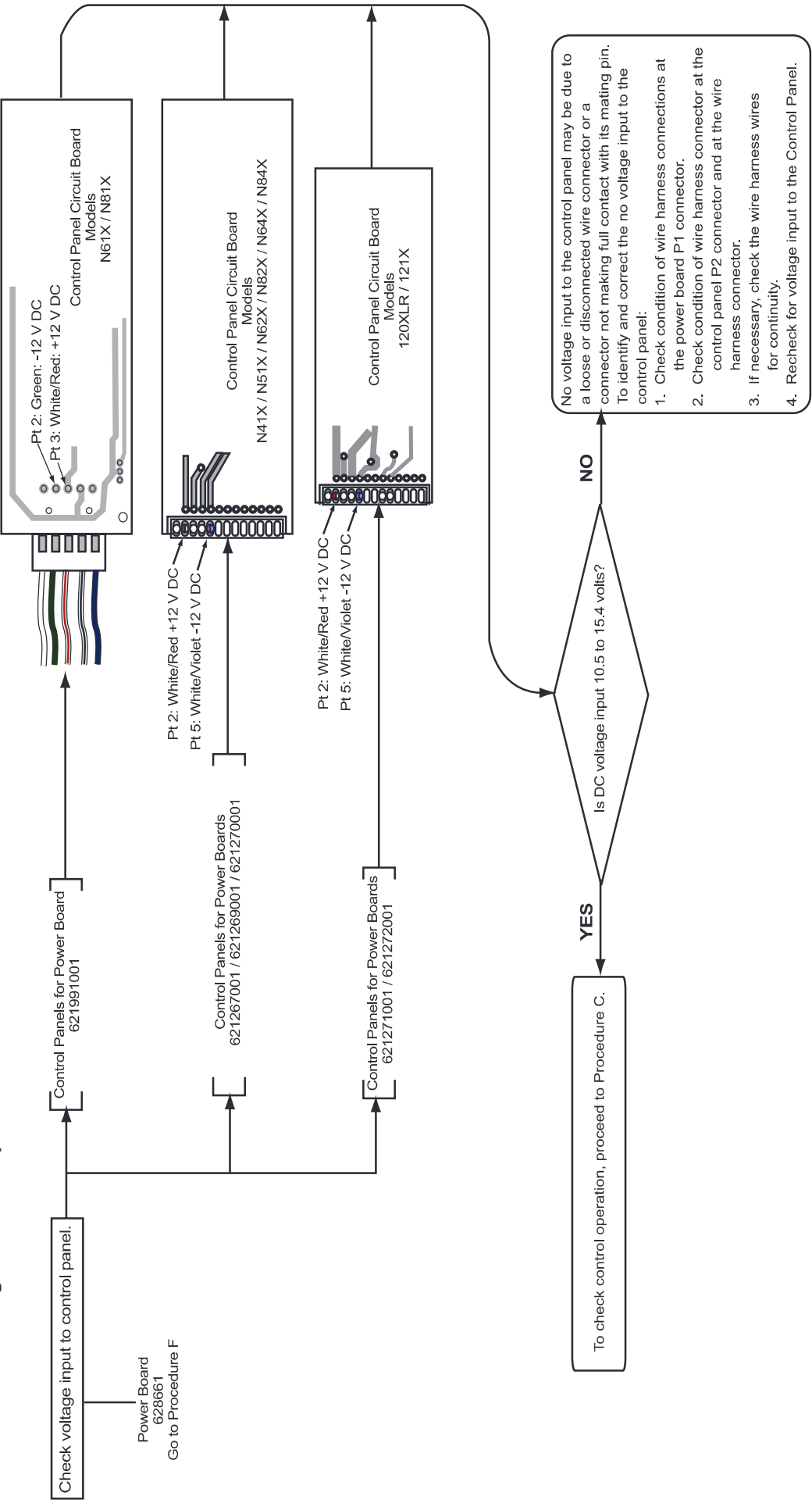


# Procedure D: Checking Power Board 621269 / 621270 / 621271 / 621272 Diagnostics Inputs and Outputs N64X / N64X.3 / N84X / N84X.3 / N109X / 12XX Refrigerators

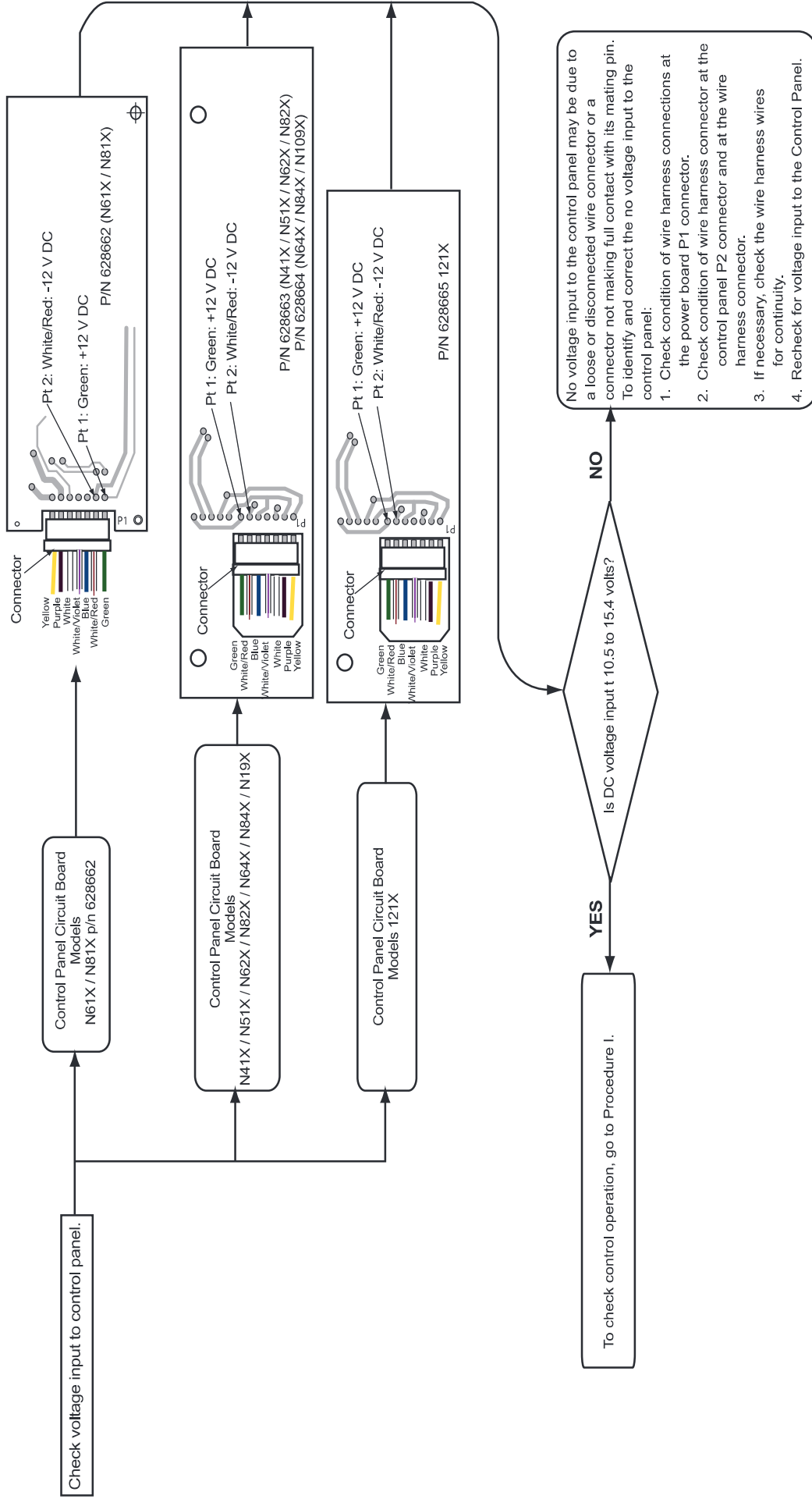




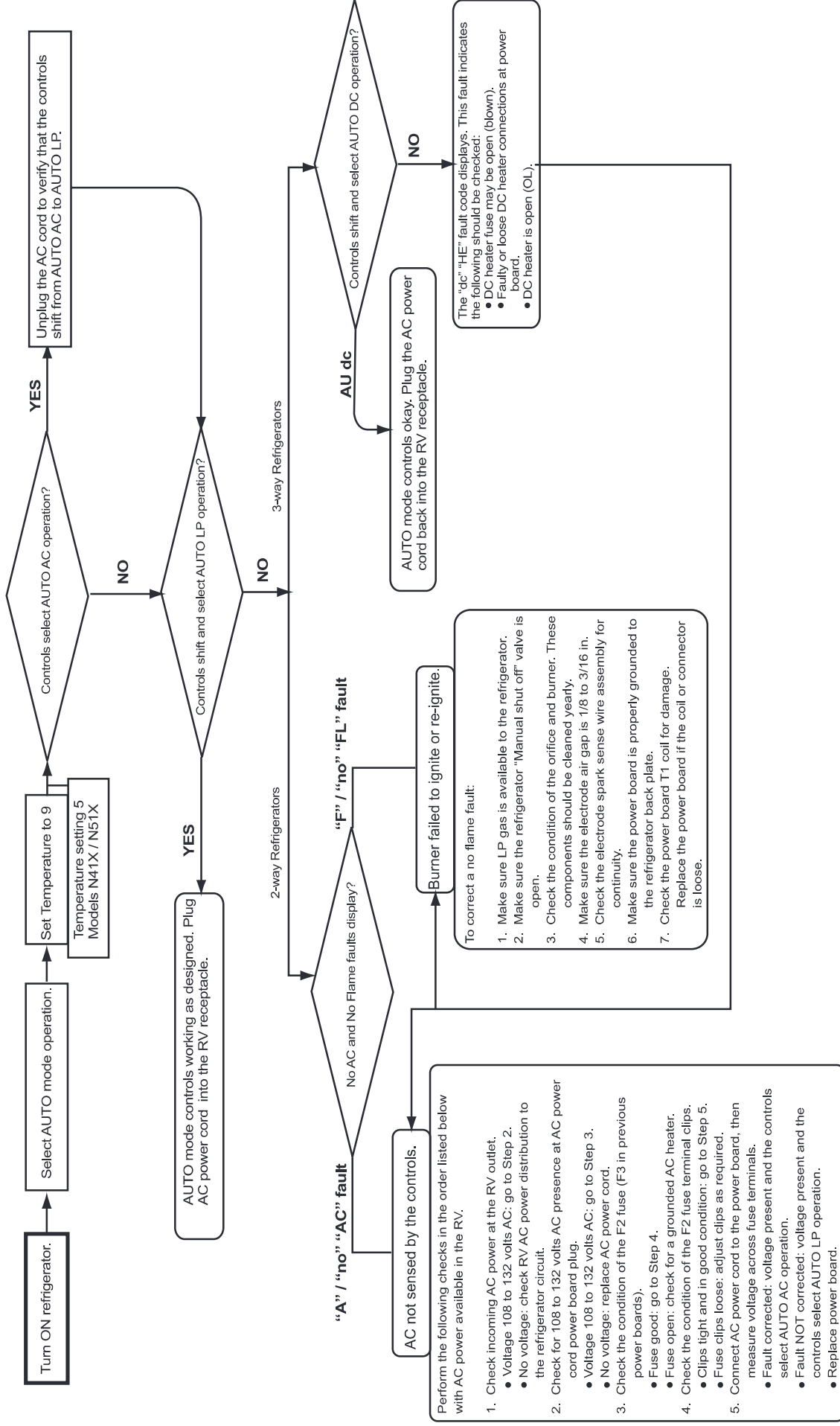
Procedure F: Checking DC Power Input to the Control Panel



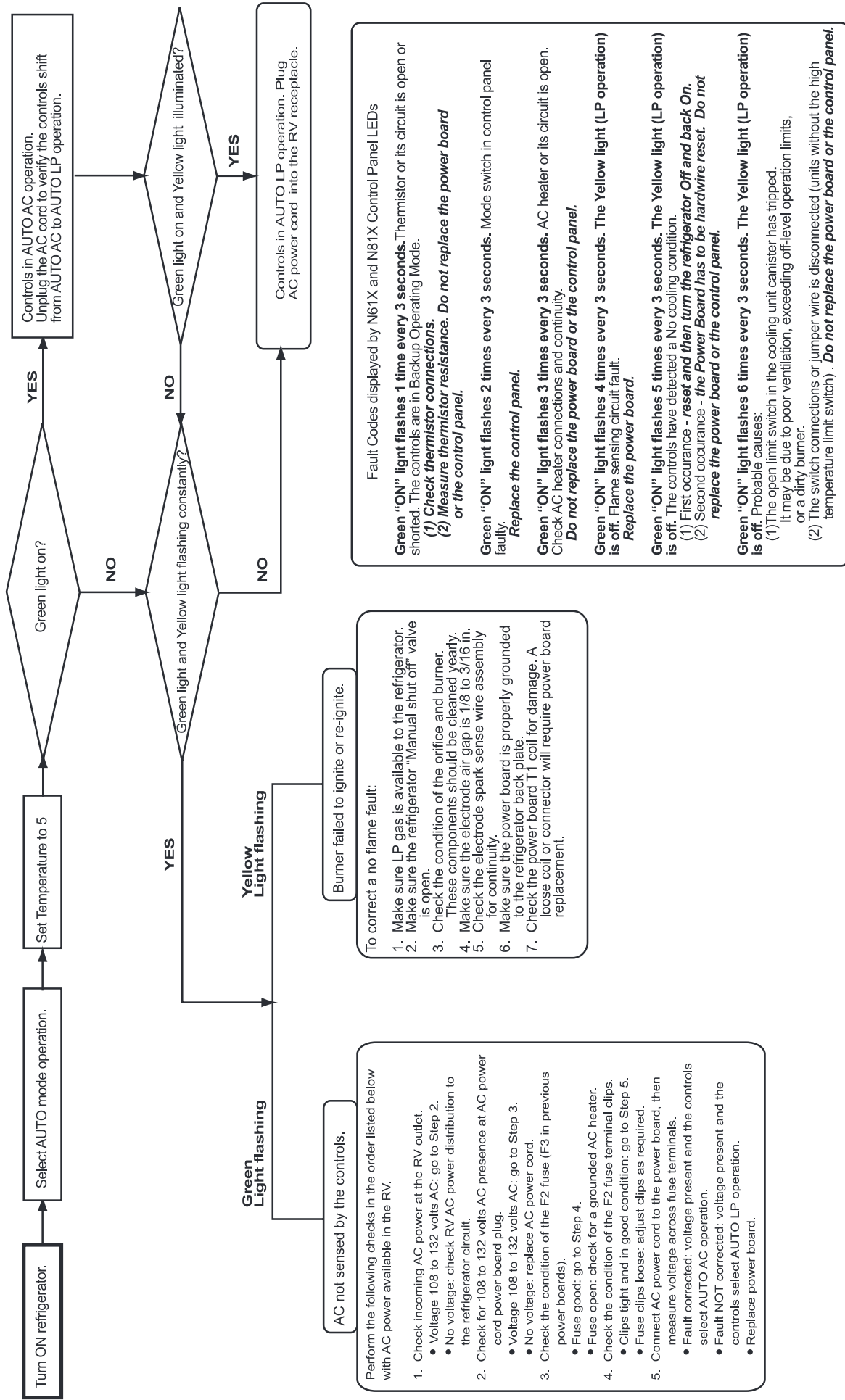
## Procedure G: Power Board 628661 – Checking DC Power Input at the Control Panel



## Procedure H: Checking Electronic Controls AUTO Operation (Except N61X and N81X Refrigerators)



## Procedure I: Checking Electronic Controls AUTO Operation N61X and N81X Refrigerators



This manual has been provided courtesy of  
My RV Works, Inc.

[www.myrvworks.com](http://www.myrvworks.com)



You can find more RV service manuals here:

[www.myrvworks.com/manuals](http://www.myrvworks.com/manuals)

Over the years of running a mobile RV repair service, having a dedicated place to access service manuals for all the different appliances and components found on RVs was something that I always had a desire to create.

I hope this resource makes your RV repairs easier, as it has mine, but please be careful and follow proper safety practices when attempting to repair your own RV.

If in doubt, please consult with a professional RV technician!



DARREN KOEPP - OWNER, MY RV WORKS, INC.

***All service manuals provided on [www.myrvworks.com](http://www.myrvworks.com) are believed to be released for distribution and/or in the public domain.***